

Location & Access



Niigata Laboratory

1-5939-22, Suido-cho, Chuo-ku, Niigata-shi, Niigata, 951-8121, JAPAN
Phone: +81-25-228-0451 Fax: +81-25-224-0950

from Niigata Station

- 15 minutes by taxi
- 20 minutes by bus, get off at "Okamoto Koji". 5 minutes walk
- 25 minutes by bus, get off at "Niigata Seiryu daigaku Mae". 1 minute walk

from Niigata Airport

- 25 minutes by taxi



Notojima Laboratory

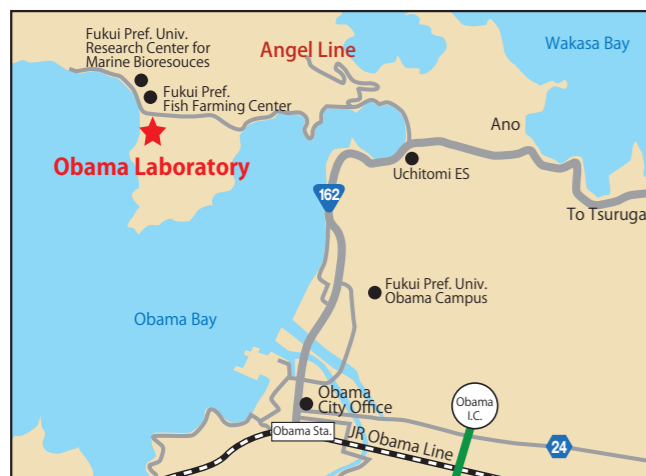
15-1-1, Notojimagarimachi, Nanao-shi, Ishikawa 926-0216, JAPAN
Phone: +81-767-84-1182 Fax: +81-767-84-1184

from Wakura-onsen Station

- 25 minutes by taxi
- 30 minutes by bus, get off at "Notojima-rinkaikoen"

from Wakura I.C.

- 25 minutes by car



Obama Laboratory

26 Tomari, Obama-shi, Fukui 917-0117, JAPAN
Phone: +81-770-52-2660 Fax: +81-770-52-2661

from Obama Station

- 15 minutes by taxi

from Obama I.C.

- 25 minutes by car



Miyazu Laboratory

1721 Odashukuno, Miyazu-shi, Kyoto 626-0052, JAPAN
Phone: +81-772-25-1306 Fax: +81-772-25-1307

from Miyazu Station

- 15 minutes by taxi

from Miyazu AmanoHashidate I.C.

- 20 minutes by car



Niigata Laboratory



Japan Sea National Fisheries Research Institute



Notojima Laboratory

Obama Laboratory

Miyazu Laboratory

<http://jsnfri.fra.affrc.go.jp>

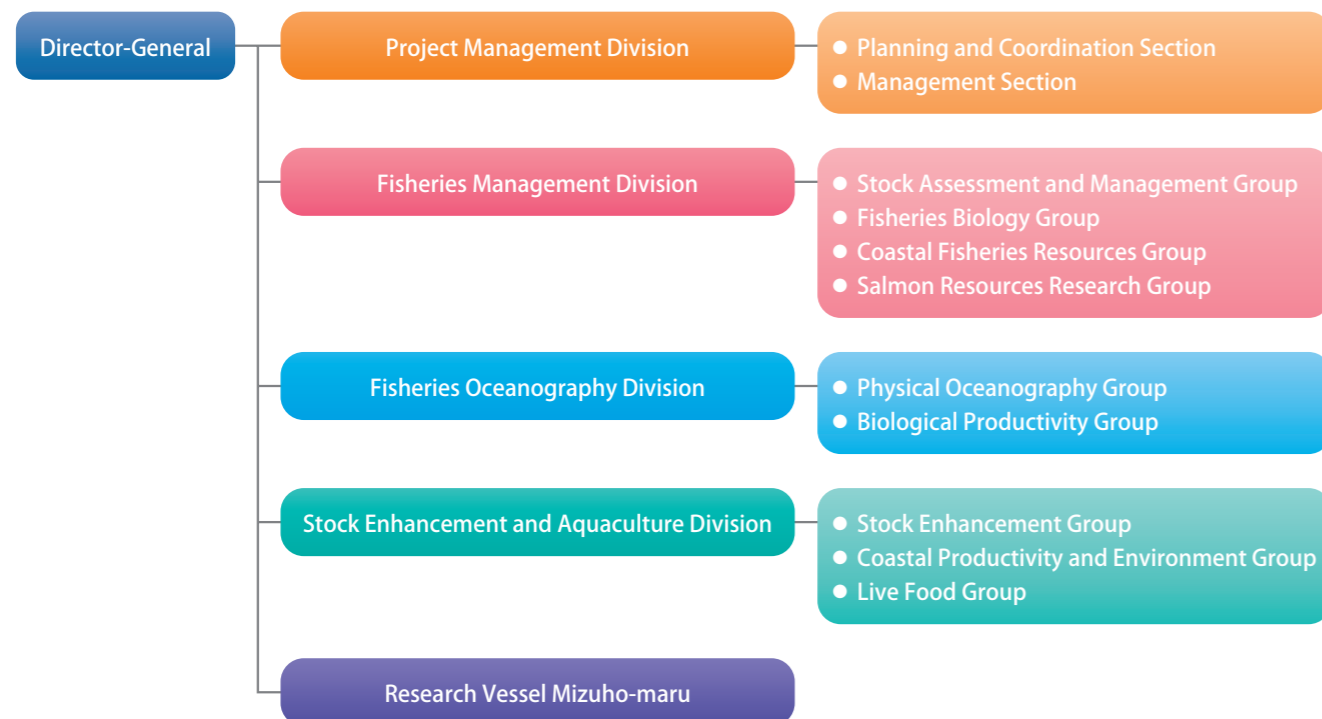
Role

The Sea of Japan is a semi-enclosed oceanic basin, consisting of the Tushima Warm Current and Subarctic water at the surface to 300 m depth and original cold water beneath. The Japan Sea National Fisheries Research Institute (JSNFRI) conducts research contributing to coastal and offshore fisheries and promotes the sustainable use of fishery resources and stock enhancement in cooperation with research institutes located along the coast of the Sea of Japan from Aomori Prefecture to Yamaguchi Prefecture.

History

- The JSNFRI was established as one of the research institutes of the Fisheries Agency at Nanao, Ishikawa Prefecture, in July 1949.
- Later, the JSNFRI was moved to Bandaijima, Niigata-city, in December 1952.
- The JSNFRI was moved to its present location in April 1965.
- In April 2001 the Fisheries Research Agency (FRA) was established by combining the research institutes of the Fisheries Agency, including JSNFRI, in accordance with the administrative reform policy of the Japanese Government.
- The JSNFRI was reorganized to include the Miyazu, Obama, and Notojima research stations in April 2011.

Organization



Project Management Division

The Project Management Division supports research of JSNFRI, coordinates research projects, exchanges information with related institutes and researchers, collects and disseminates information, and manages the library. The division manages personnel services and affairs, welfare programs, procurement, and budget and facility management.

Fisheries Management Division

In the Sea of Japan, valuable fisheries resources include common squid, snow crab, and fish, such as yellow tail. For sustainable management, the Fisheries Management Division collects data at fish markets and from research vessel surveys to produce stock assessments for 14 species based on these data. The division investigates mechanisms causing population fluctuations, studies animal ecology and life history, provides information on trends, and proposes fisheries management policy. The information is used for determining total allowable catch and other management policies of the Japanese Government. In addition, the division conducts research and disseminates information pertaining to salmon hatchery technology.



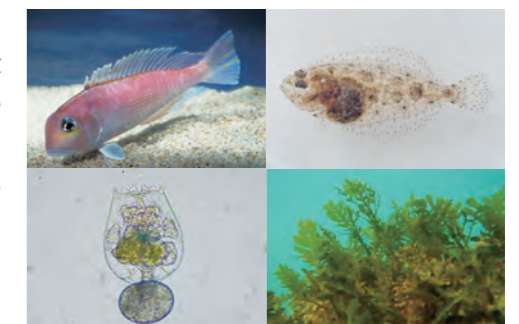
Fisheries Oceanography Division

Fisheries resources are affected by physical environments, such as water temperature, salinity and currents, and by biological conditions, such as phytoplankton and zooplankton. The Fisheries Oceanography Division investigates physical and biological environments through its long-term oceanographic survey in the Sea of Japan, clarifies factors influencing fluctuations of fisheries resources, and contributes to the development of technology to utilize fisheries resources sustainably and efficiently. The division is responsible for studies that deal with environmental issues, such as the outbreak of giant jellyfish that is affecting fisheries in the Sea of Japan.



Stock Enhancement and Aquaculture Division

Fisheries are conducted in shallow coastal waters and in continental shelf waters in the Sea of Japan. The Stock Enhancement and Aquaculture Division conducts research to enhance and utilize rationally the fisheries resources living in these waters. The division investigates the relationship between living resources, such as juvenile fish, shellfish, and seaweed, and environmental condition in their habitats, such as algal beds and sandy substrates. The division develops methods for efficient artificial production of juvenile fish and investigates the environmental conditions at release sites.



Research Vessel Mizuho-maru



The *Mizuho-maru* is a research vessel built in 1981 and refurbished in 1994. The vessel conducts research on fisheries resources, environment, and oceanography in the Sea of Japan.

- Length: 38.47m
- Breadth: 6.80m
- Depth: 2.90m
- Gross tonnage: 152 ton
- Speed: 10.60knot
- Maximum number of crew: 24